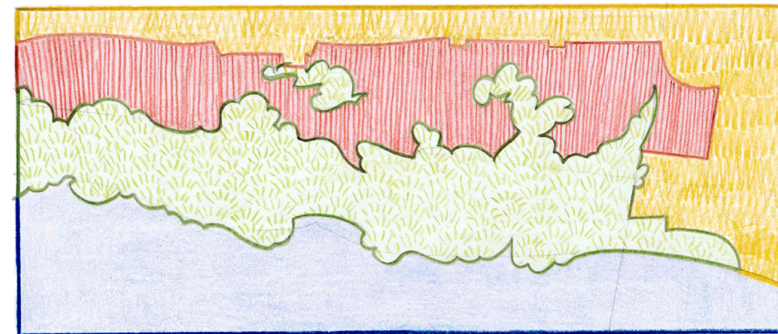
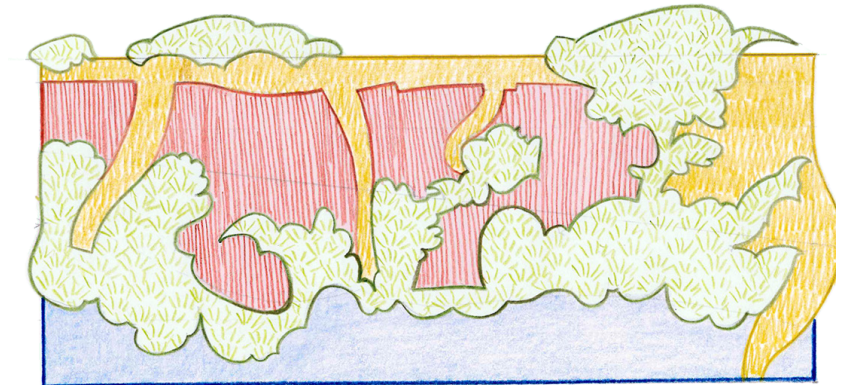


CHARACTER AREAS



REALITY



PROPOSED

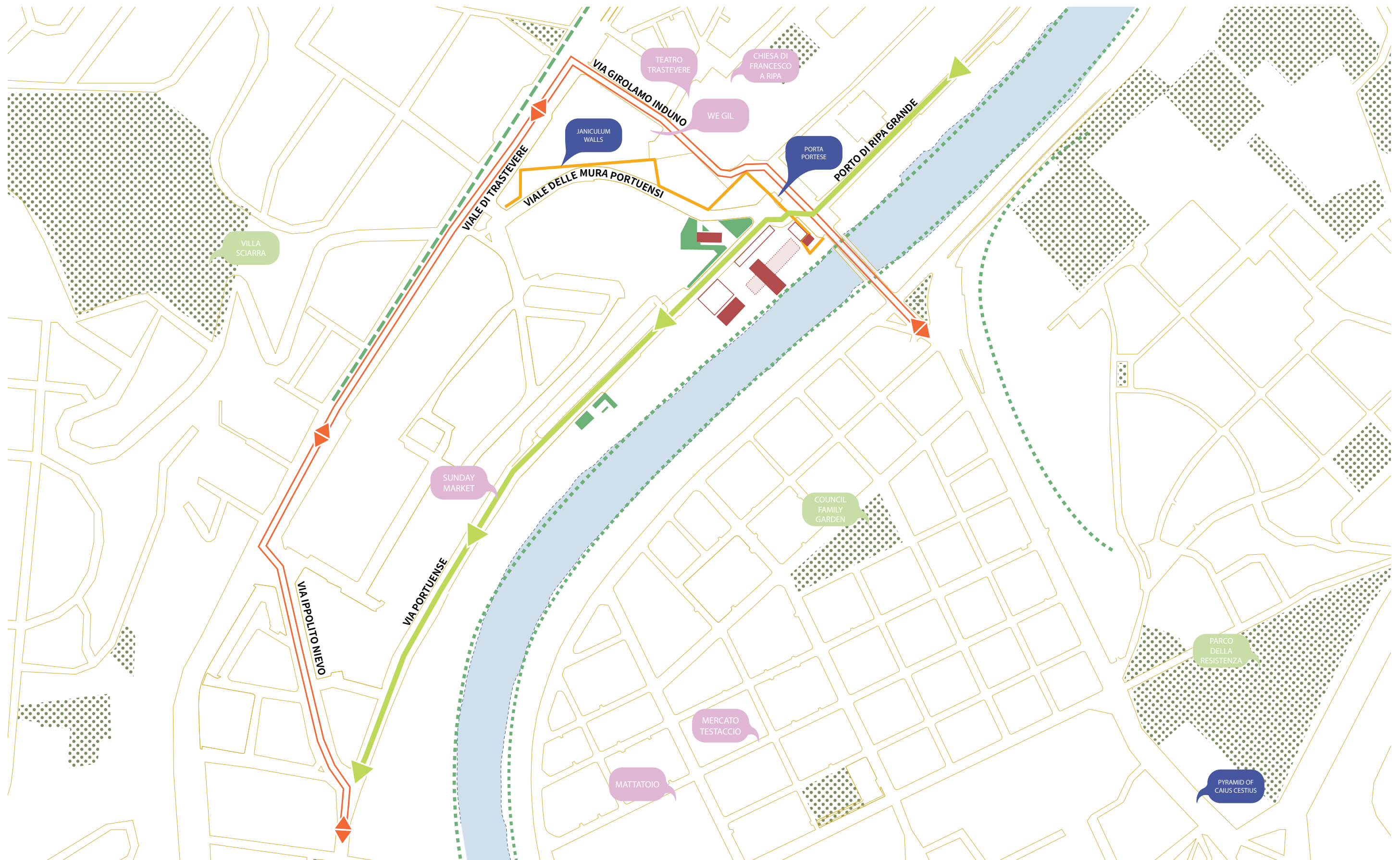
Urban Foray







Museum of Rome's Natural and Cultural History

Urban Foray, the Museum of Rome's Natural and Cultural History is an urban and architectural intervention which adapts a historical complex into a community museum designed to bring in and promote a connection with the natural landscape. The design process for this project was centred around sustainability through vegetation, adaptive reuse, community and energy.

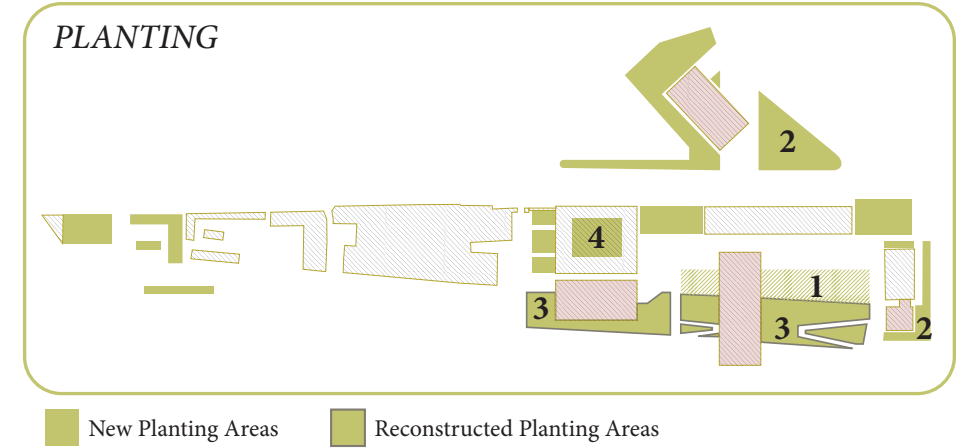
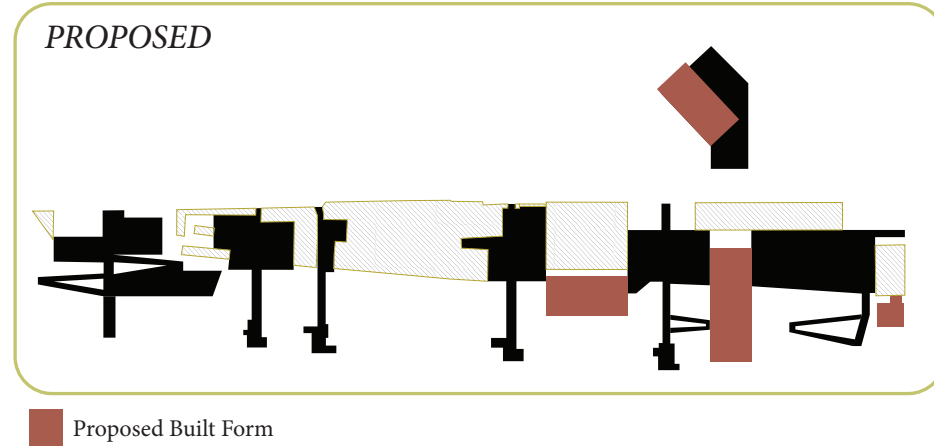
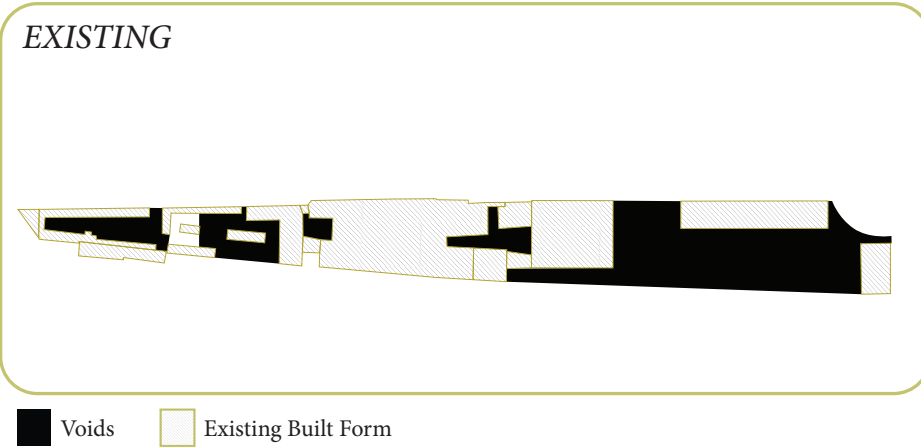
Rather than using design to control nature and landscape, we used landscape and nature to design. This ethos takes an innovative approach that values the creative power of wild and chaotic forces on the site over clean and manicured attempts at control, thus creating a project for the future. A careful and detailed analysis of the site made two factors apparent. First, the chaotic nature surrounding the site was quick to overtake the built spaces. Second, pedestrians and cyclists sought access through the site and down to the Tiber River trail network. The Museum works with both of these forces at play on the site rather than against them to ensure a more accessible and sustainable future.

By designing with the generations to come in mind every effort is made to uphold the tenets of sustainability: Not taking more than you can give back, creating for the future, conserving natural and built infrastructures and creating healthy environments for occupants and users.



-  Cultural Centre
  Green Space
  Historical Monument
  Pedestrian-Friendly Green Walkway
-  Proposed Building
  Proposed Green Space

The project site currently exists in a desolate urban area where the amount of green space, cultural hubs and access to the Tiber River is severely limited. Urban Foray intervenes at a key point in Rome's city fabric, creating a fulcrum for community involvement and sustainable health. What was previously a void in the city has become a green corridor for cultural involvement bringing in new initiatives to a previously underserved neighbourhood.



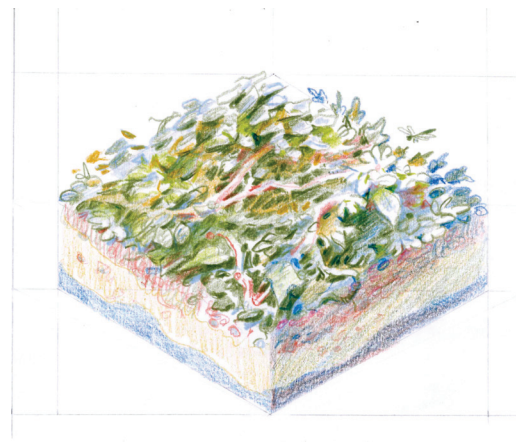
The subject matter encountered in Urban Foray's museum space is the underrepresented cultural connection that Rome has with the natural landscape and vegetation. For this reason, it is paramount for this museum to pay respect to the natural and cultural context. The process began with a careful examination of the greenery on the site, inviting it in and giving space for it to grow. The community center then gives patrons an opportunity to create a relationship with their natural environment in an urban setting, developing an appreciation for the non-manicured growth and bringing them closer to their environment. Urban Foray promotes awareness on the issue of sustainability and environmental problems using the contents and subject of the museum, but also offers a built example of what a sustainable future can look like.



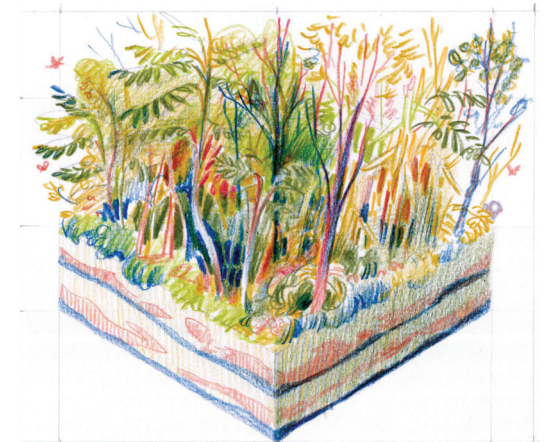
1. URBAN GROWTH
to bring a green spark to public space



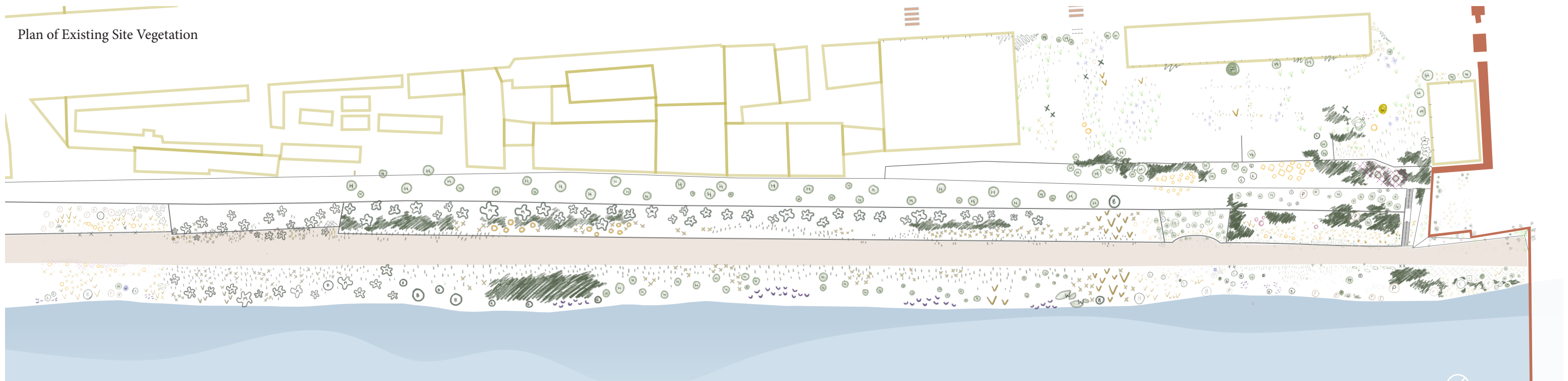
2. TALL GRASSES
to provide a whimsical landscape with visibility



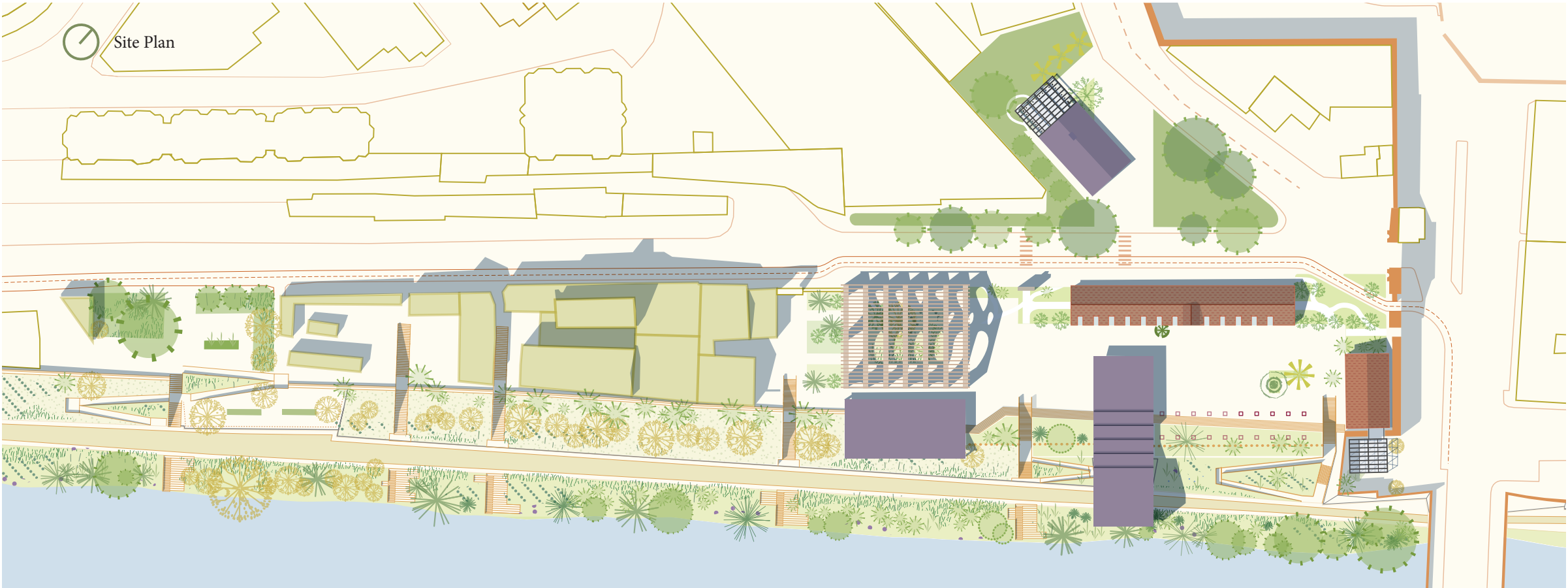
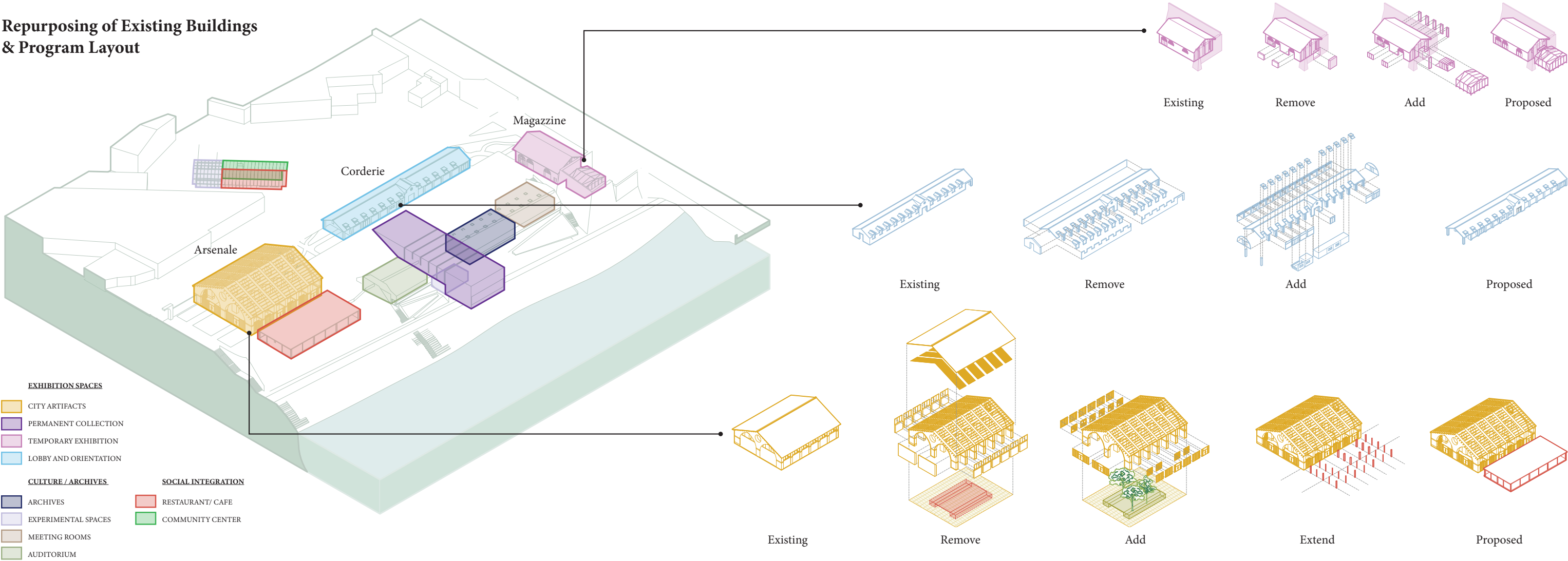
3. WILD GROUND COVER
to quickly re-green the reconstructed retaining wall



4. TREE GROUPINGS
to create a pocket forest in the Arsénale

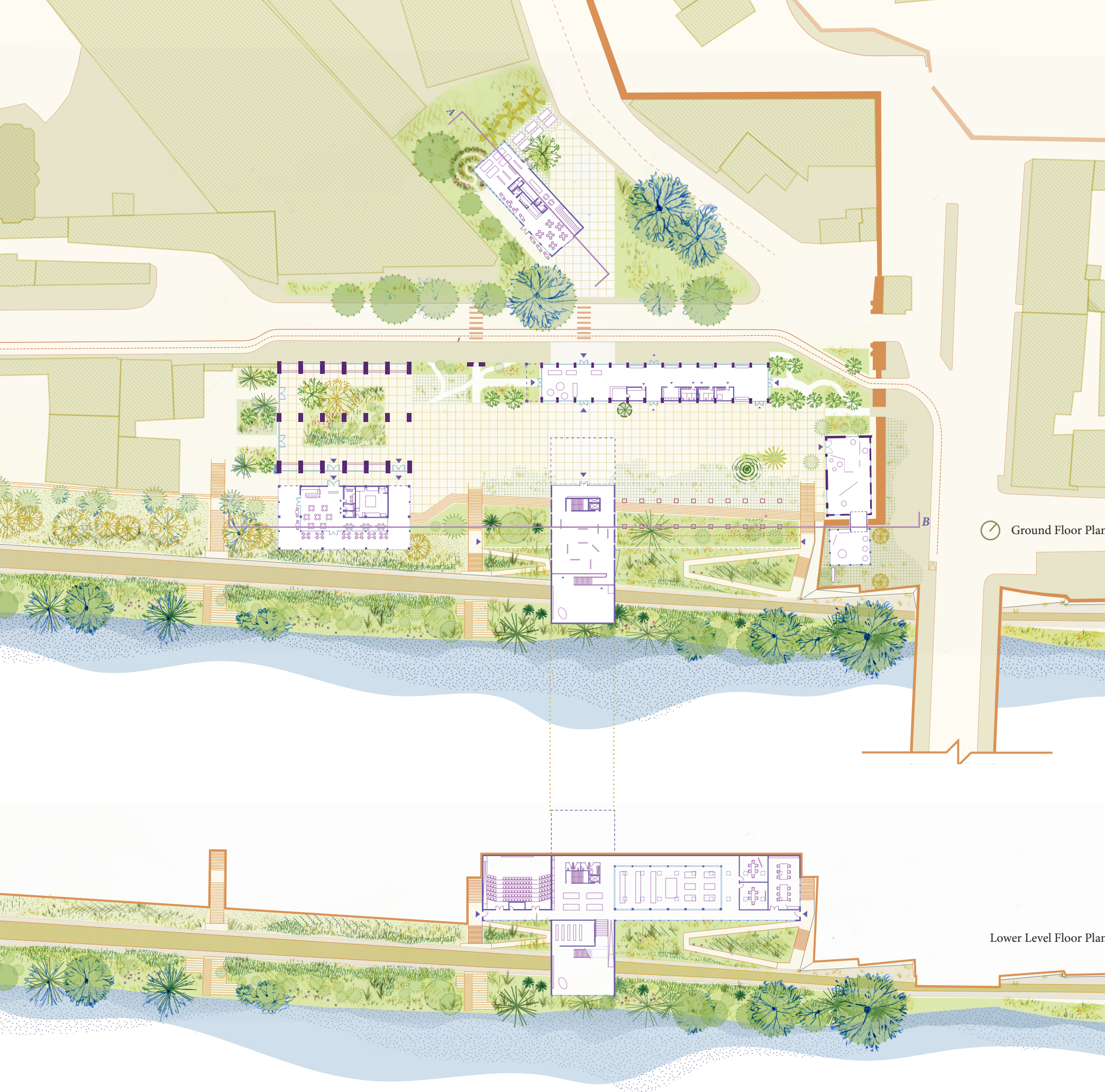


Repurposing of Existing Buildings
& Program Layout



Rome is a city of deep and rich built history with the permanence and flexibility of the stone architecture cementing adaptive reuse deep into the Roman lifestyle. Urban Foray makes careful reuse of the existing buildings and public space on site, which minimizes the impact of necessary construction and only makes new spaces where it provides a greater benefit.

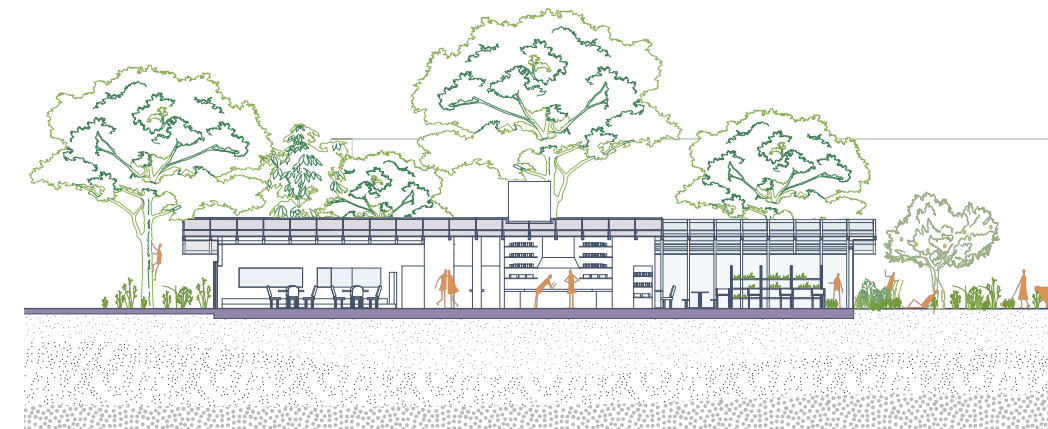
This process of architectural revival began with the materials, structures and vegetation, but it also continued into maintaining the visual and cultural connections that the site had with its context. Historically, the River had a massive presence on the site, supporting industry, leisure and resources. Although the current uses have changed, this connection can be adapted to create a more sustainable connection with the waterscape; a connection that involves mutual care and respect, shown evidently in the respect that the architecture pays to its context.



Institutional and Community Programming: Giving Back

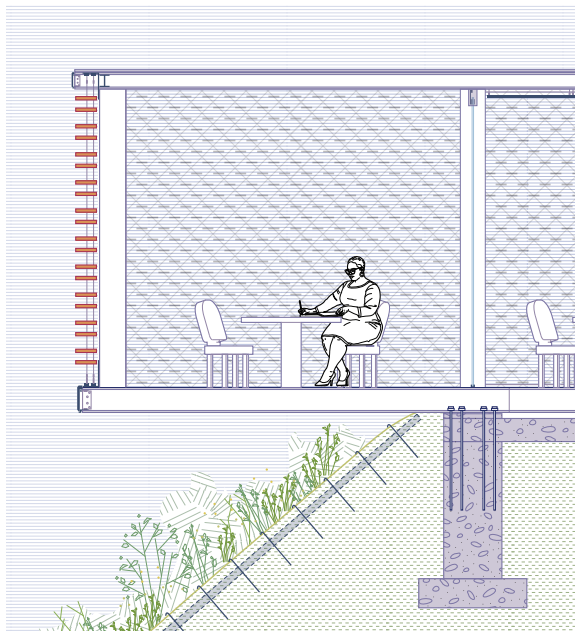


Cafe to Community Garden Connection



Greenhouse - Section A

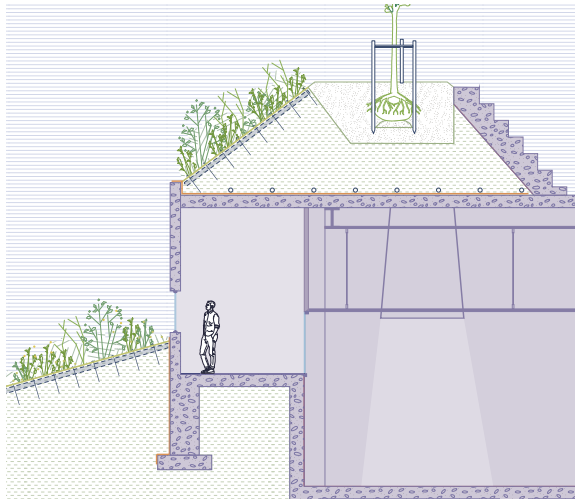
One of the essential components of creating a sustainable building project is to foster community involvement. In Urban Foray, the entire flow of the site was reconsidered to create a vegetated hub for community activity which acts as a point for connection and initiation of sustainable action. The main two-way street passing through the site was converted into a one-way with wide green buffers, encouraging a safer and larger pedestrian presence. The conversion of an empty parking lot (across the initial project site boundary) into an open community garden, cafe and park is essential for bringing food, income and leisure into an area of the city that was otherwise lacking. The museum complex empowers visitors and residents and gives them the tools to begin their own journey towards sustainability.



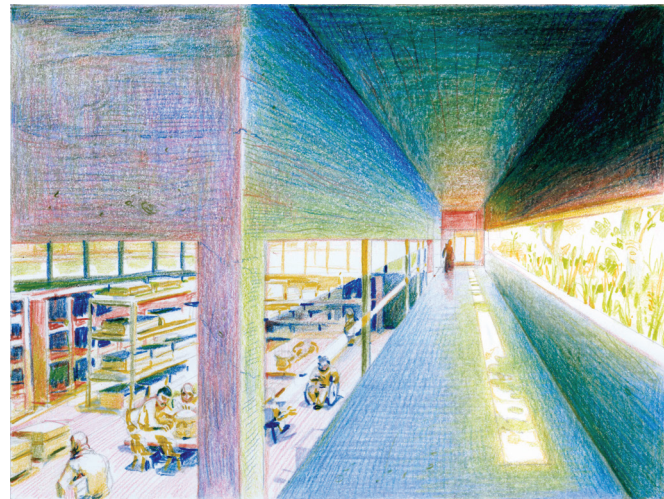
Section Detail - Repurposed Shingle Facade



Arsenale Interior Open-Air Garden Space



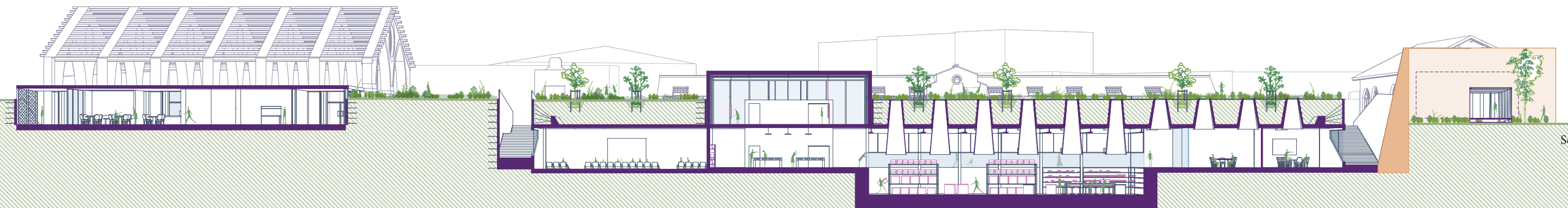
Section Detail - Retaining Wall Planting



Lighting, Energy, and Experience

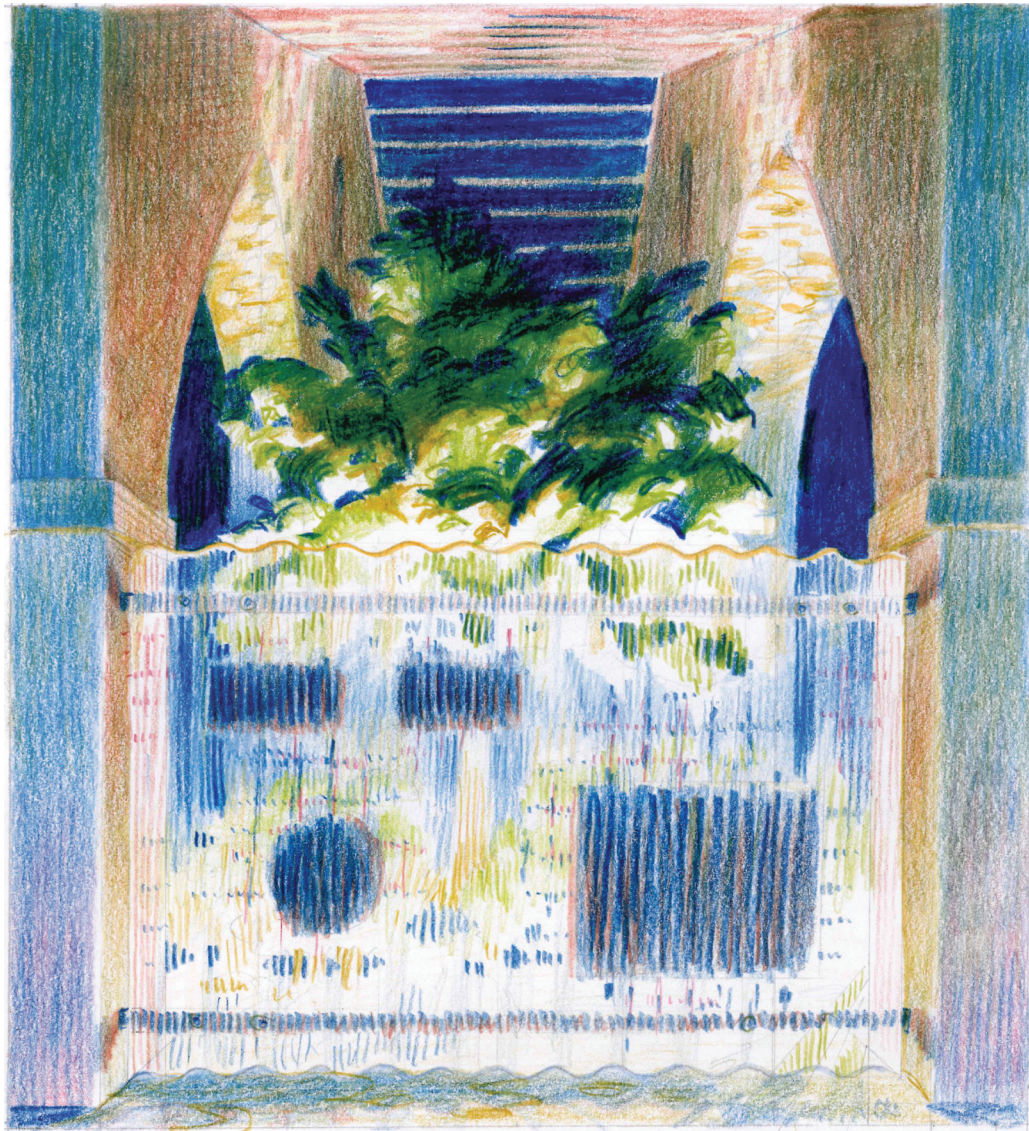
The main operational costs of a building in Rome, which impact sustainability, deal with lighting and cooling. Urban Foray uses innovative design techniques to maximize the amount of indirect sunlight allowed into the building while retaining shade and green surfaces to reduce the cooling costs involved in the hot Roman summers. The use of large overhangs and screens creates cool and comfortable spaces for patrons, while operable windows bring in a comfortable breeze. The careful placement and orientation of glazing allows for tuned control of temperature, lighting and views. Uniquely, Urban Foray uses a variety of openings such as skylights, punched windows and panoramic glazing which respond directly to the specific context. The museum also plays with in-between spaces that use recycled site materials to dapple the sunlight and allow for beautiful transitions between interior and exterior environments that remain habitable year round.

The museum also maintains an essential connection to the Tiber river below. Views are created down to the water, where before there were none, without disrupting the existing vegetation or environment. The architecture nestles comfortably within the hill, but peers through the soil at key areas with glazing.



Section B

Urban Foray brings a new lens to sustainability in architecture by shifting the natural environment from a background for cultural artifacts into the cultural artifact itself. Patrons are encouraged to rethink what a sustainable future looks like, and the museum puts into question their relationship and understanding of nature.



Arsenale Exterior at Night



Lifted Temporary Exhibition Showcase Structure